

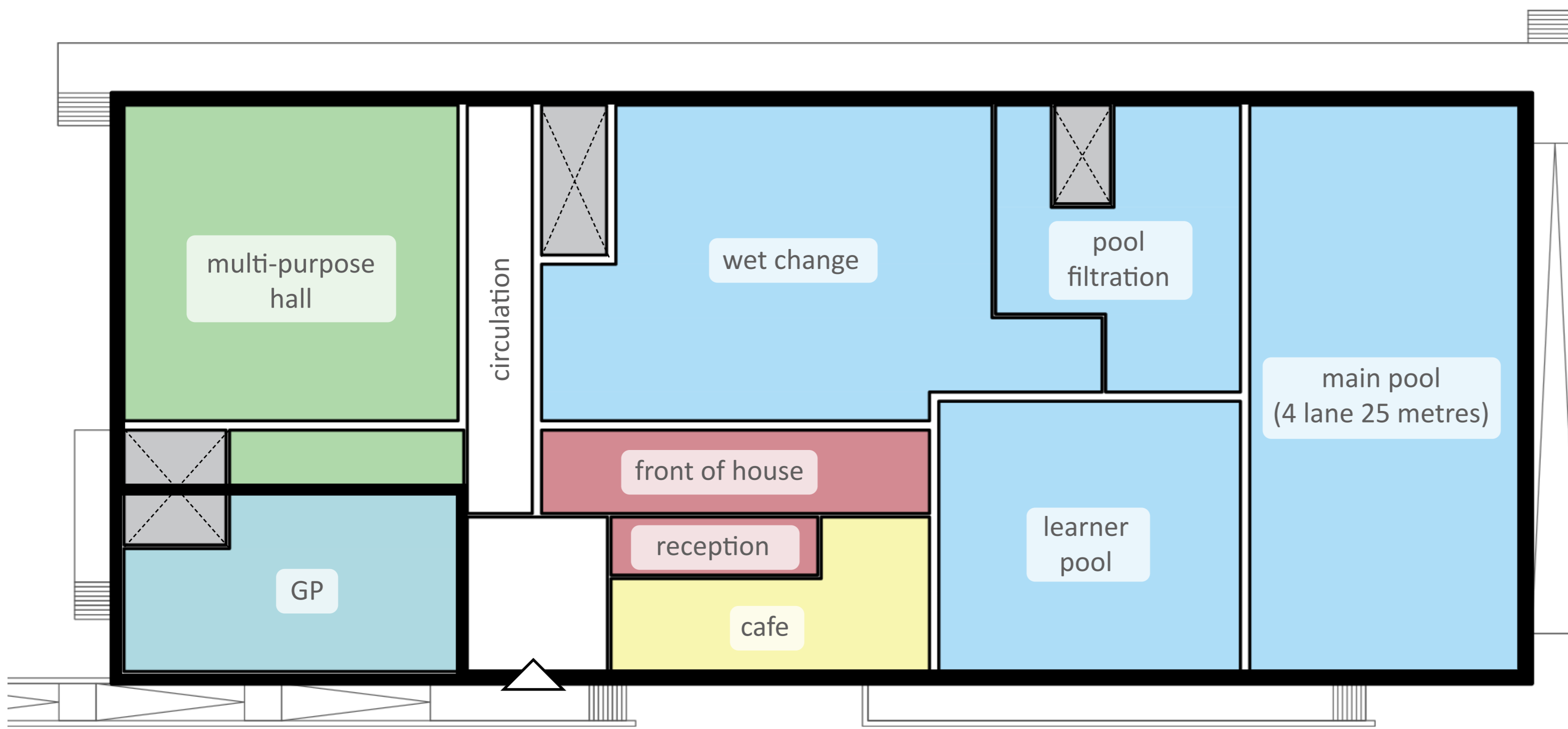
New Bransbury Park leisure centre

public consultation - March 2023



5 PROPOSAL TWO - LEISURE CENTRE WITH GP SURGERY

OPTION TWO with GP surgery



Proposed ground floor plan

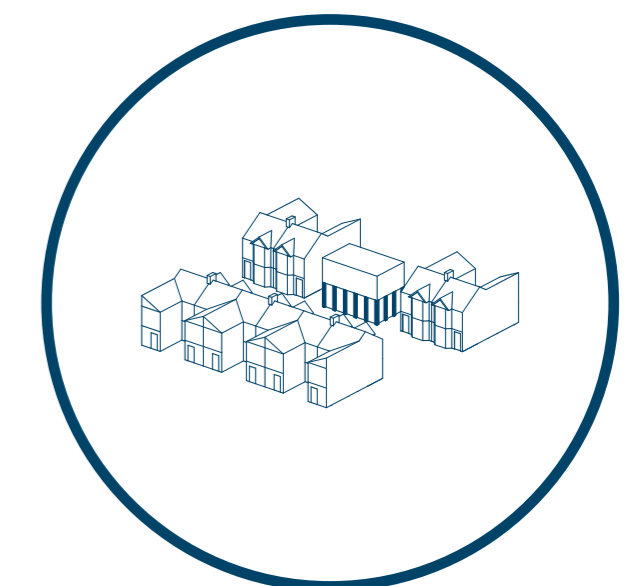
Strategic moves



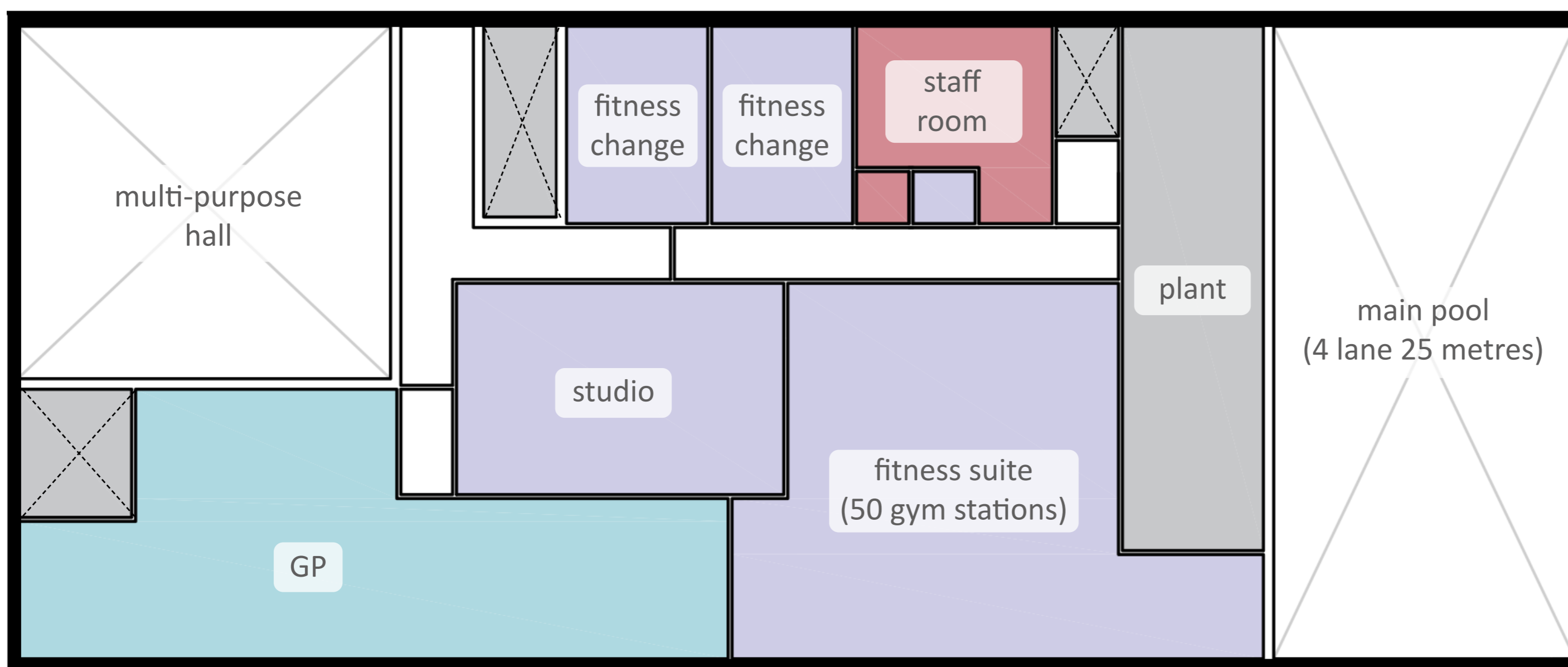
Respond to the topographical and tree conditions on site



Respond to the conditions of the park and preserving open space



Completing the street and enhancing civic presence

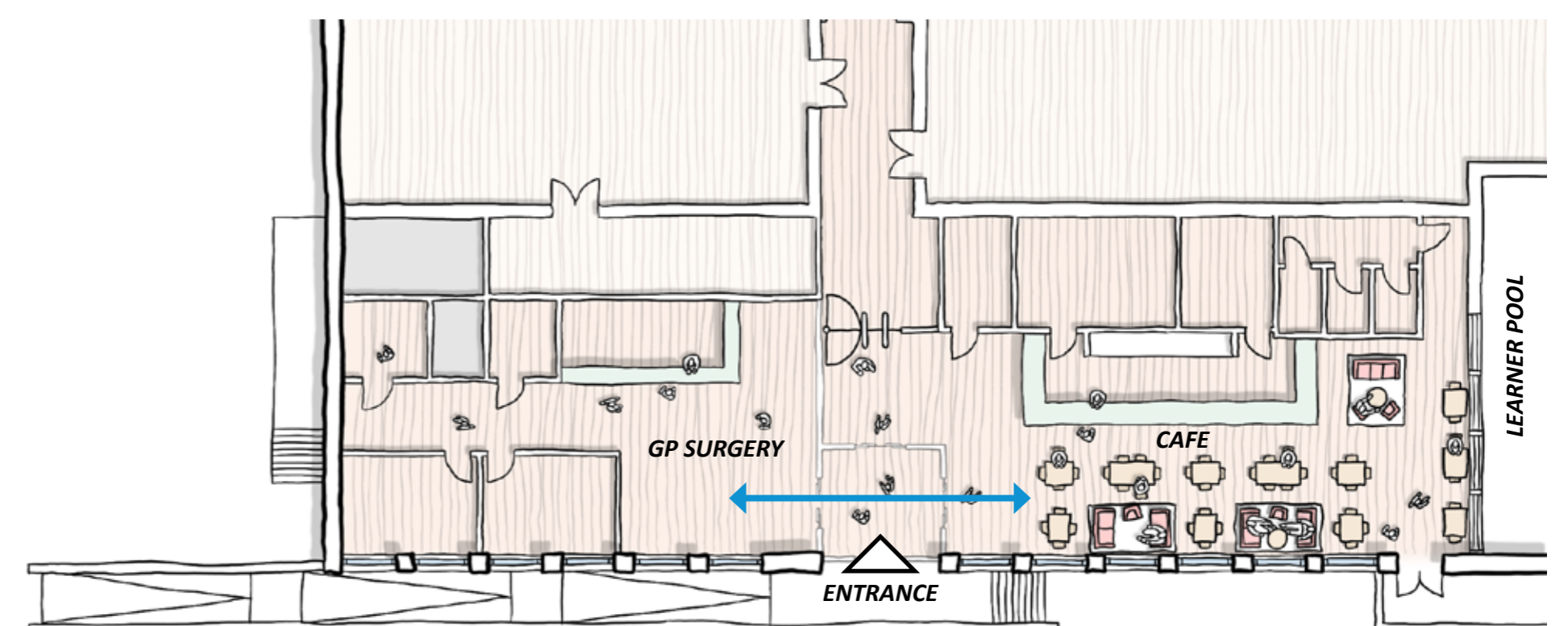


Proposed first floor plan

GROUND FLOOR - SHARED ENTRANCE

To encourage the feeling of one health and wellbeing facility, there will be one main entrance for both the leisure and community health centre. The design is to encourage a free flow of users between both the GP surgery and leisure centre. The co-location of these facilities aims to encourage a greater uptake of fitness and wellbeing offers in the leisure centre from patients of the surgery.

The ground floor will feel open between the leisure and GP surgery by using glazing, similar floor finishes and way finding where possible to promote visible connectivity between the separate facilities. So, whilst the two will be entirely separate from one another, it will give a feeling of one holistic health and wellbeing offer, encouraging surgery patients to engage with the offers available in the leisure centre.



Please note the diagram above is entirely indicative and subject to design development following input from the operator and NHS. Furthermore, furniture and room layouts are indicative only and subject to change.