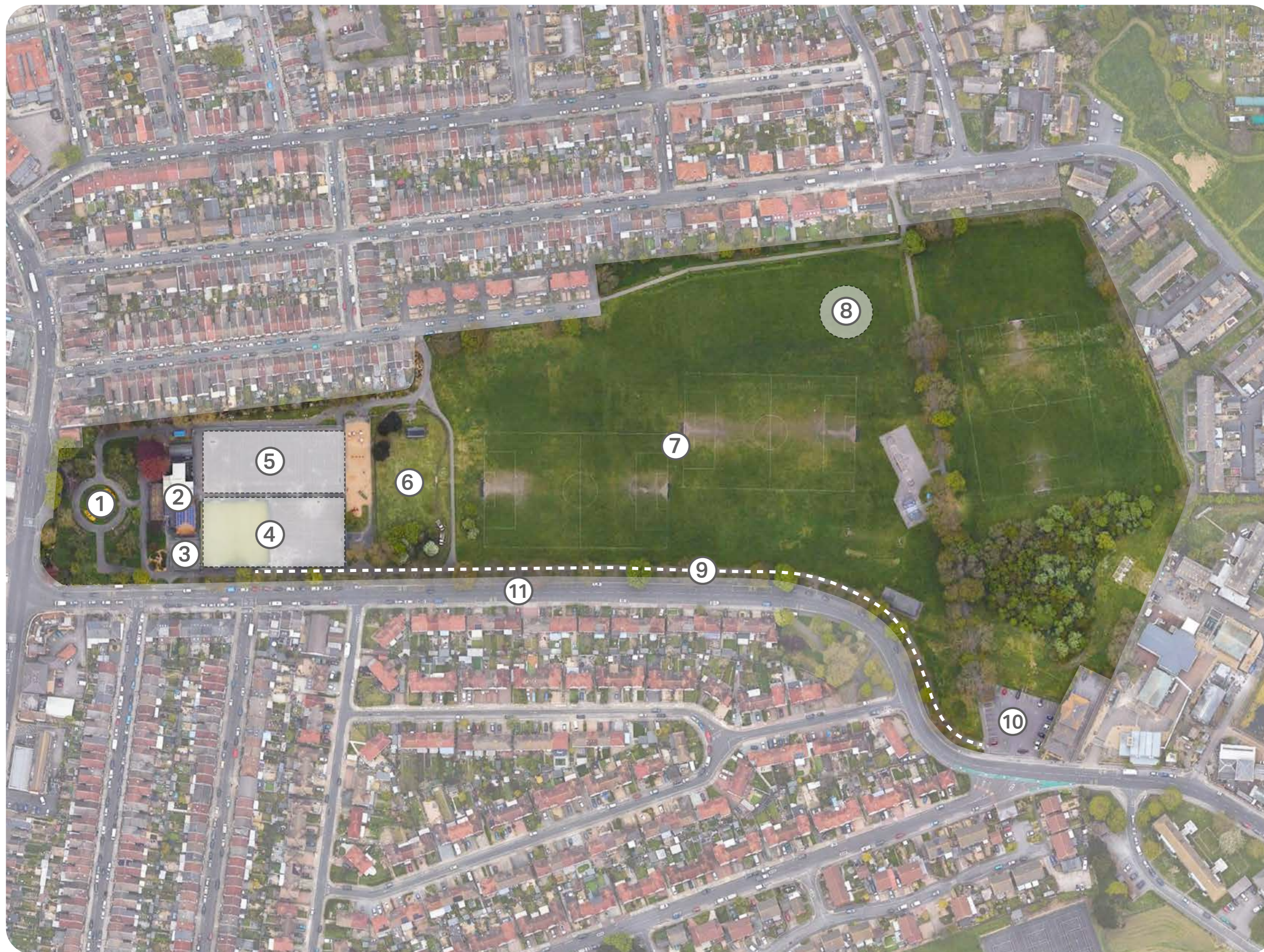


New Bransbury Park leisure centre

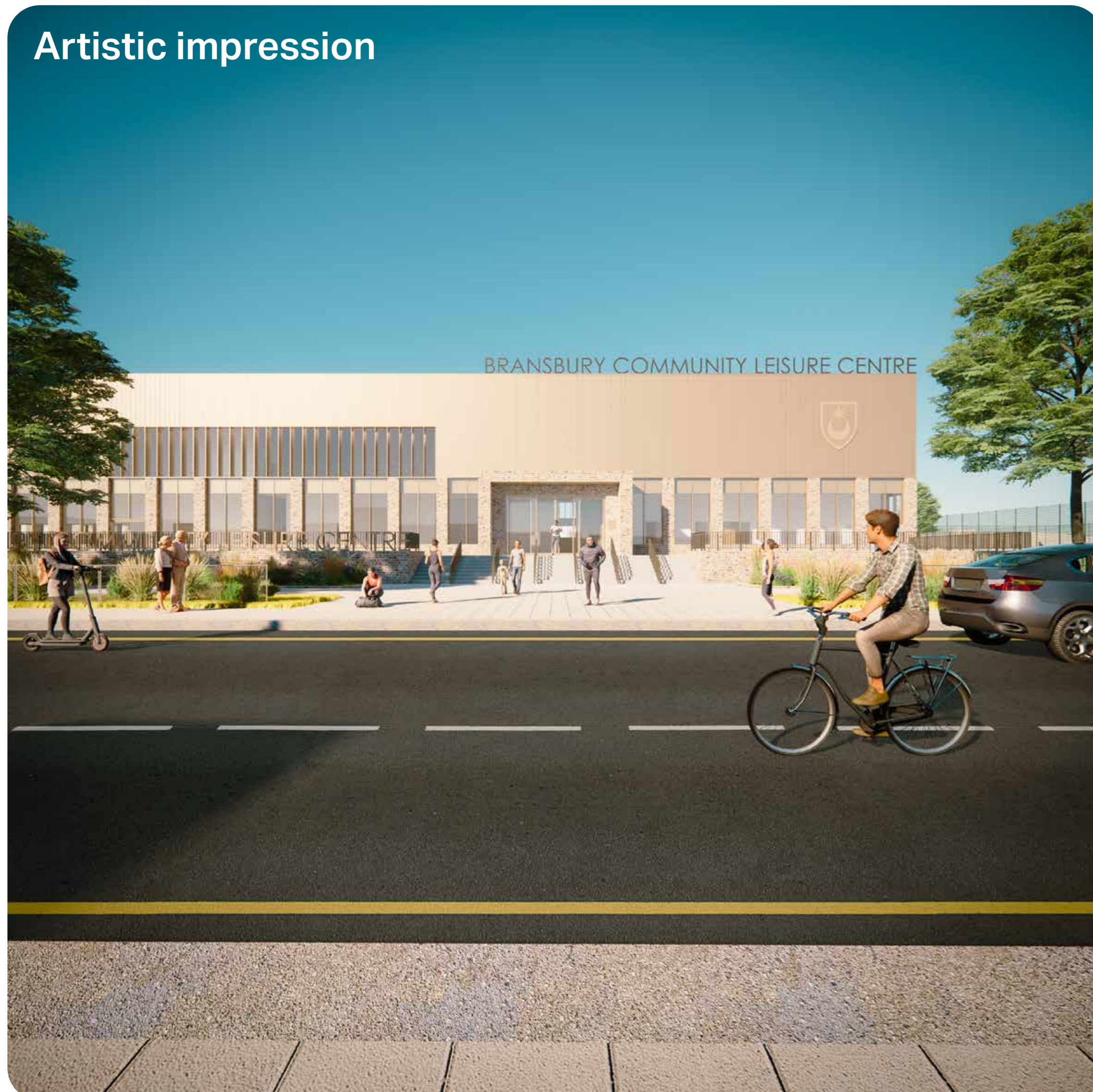
public consultation - March 2023

2 BRANSBURY PARK SITE PLAN



- 1 Retained gardens
- 2 Retained community centre
- 3 Proposed children's playground
- 4 Proposed leisure centre
- 5 Proposed sports courts
- 6 Retained miniature railway
- 7 Retained 11 v 11 grass football pitches
- 8 Proposed flooding implementation
(potential change of level to remediate raising of the proposed new leisure centre)
- 9 Proposed route improvements
- 10 Proposed additional parking
- 11 Retained three-hour maximum stay road parking

Artistic impression



Eastney Swimming Pool

Eastney Swimming Pool has closed permanently. As a standalone pool it needed considerable subsidy to keep it open, and the building is at the end of its life. It would cost many millions to re-open it. A new facility with a pool combined with indoor dry sports can operate without significant subsidy and is the most cost-effective way to provide a new swimming pool for the Eastney and Milton communities.

This new facility is intended to replace Eastney Swimming Pool and partly replace the sports hall at Wimbledon Park Sports Centre (along with other new provision elsewhere in the city) which is nearing the end of its life.

The council is committed to supporting swimming as an excellent form of exercise and an important life skill. We will continue to offer free swimming for under 12s, including here at Bransbury Park.