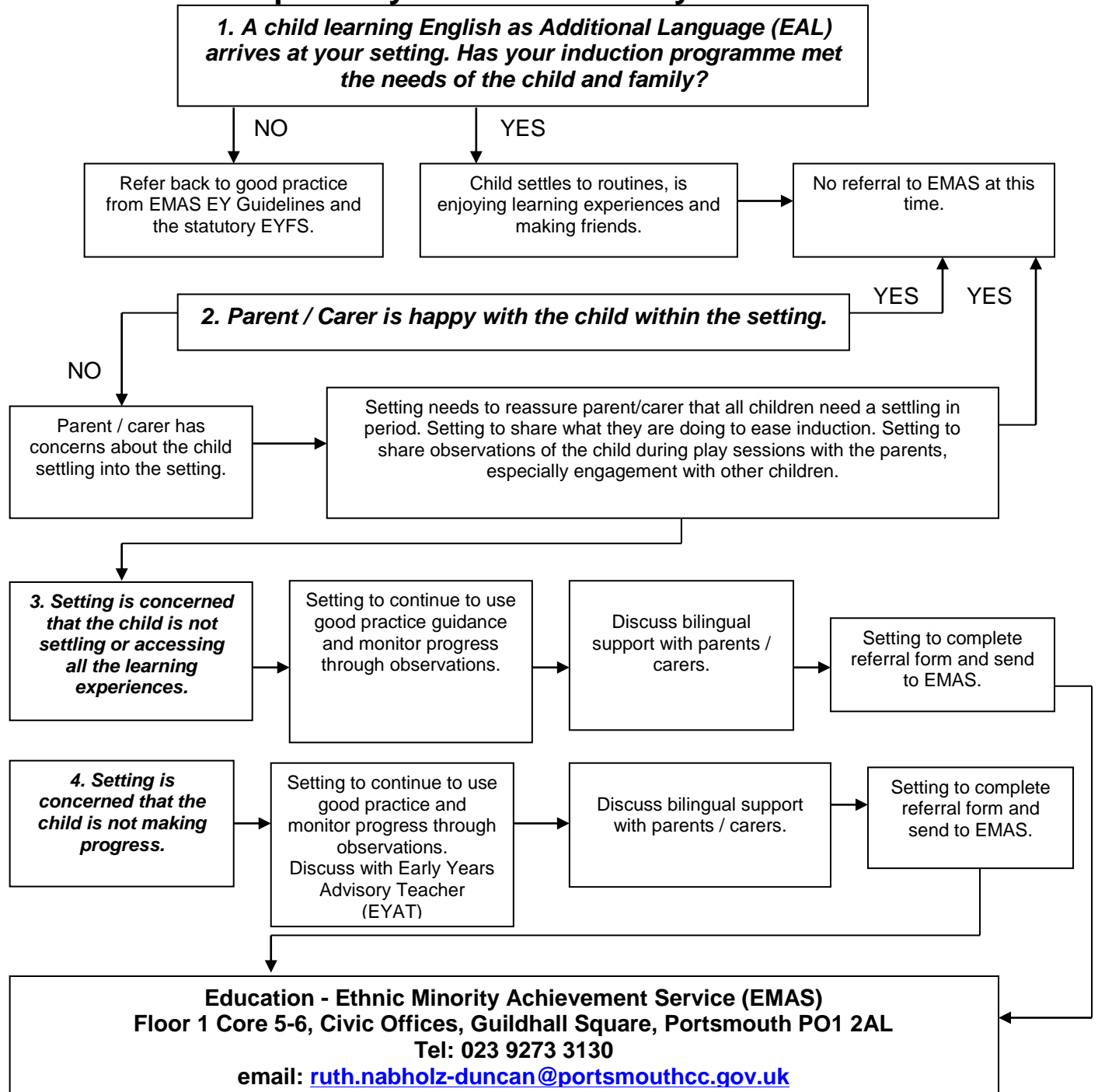


# EARLY YEARS

## Education – Ethnic Minority Achievement Service (EMAS) Guidance pathway for referrals Early Years Providers



**Please remember there may be no language support available.** (Over 100 languages spoken in Portsmouth). Please use the EMAS EY Guidelines

- When bilingual support is offered please remember;**
1. Setting to work in partnership with Bilingual Learning Assistant (BLA) guiding and supporting them to meet the child's needs.
  2. Setting to monitor child's progress in partnership with Bilingual Learning Assistant (BLA) and share records with parents/carers e.g. Learning Journeys.
  3. Setting to provide feedback to EMAS when requested.

It may be possible to offer 'one off' or temporary BLA sessions to settings to settle a child or make phone calls to parents/carers to explain processes or ascertain home language skills etc.

**Always pass all records specific to the child onto the next setting or school with parental consent.**