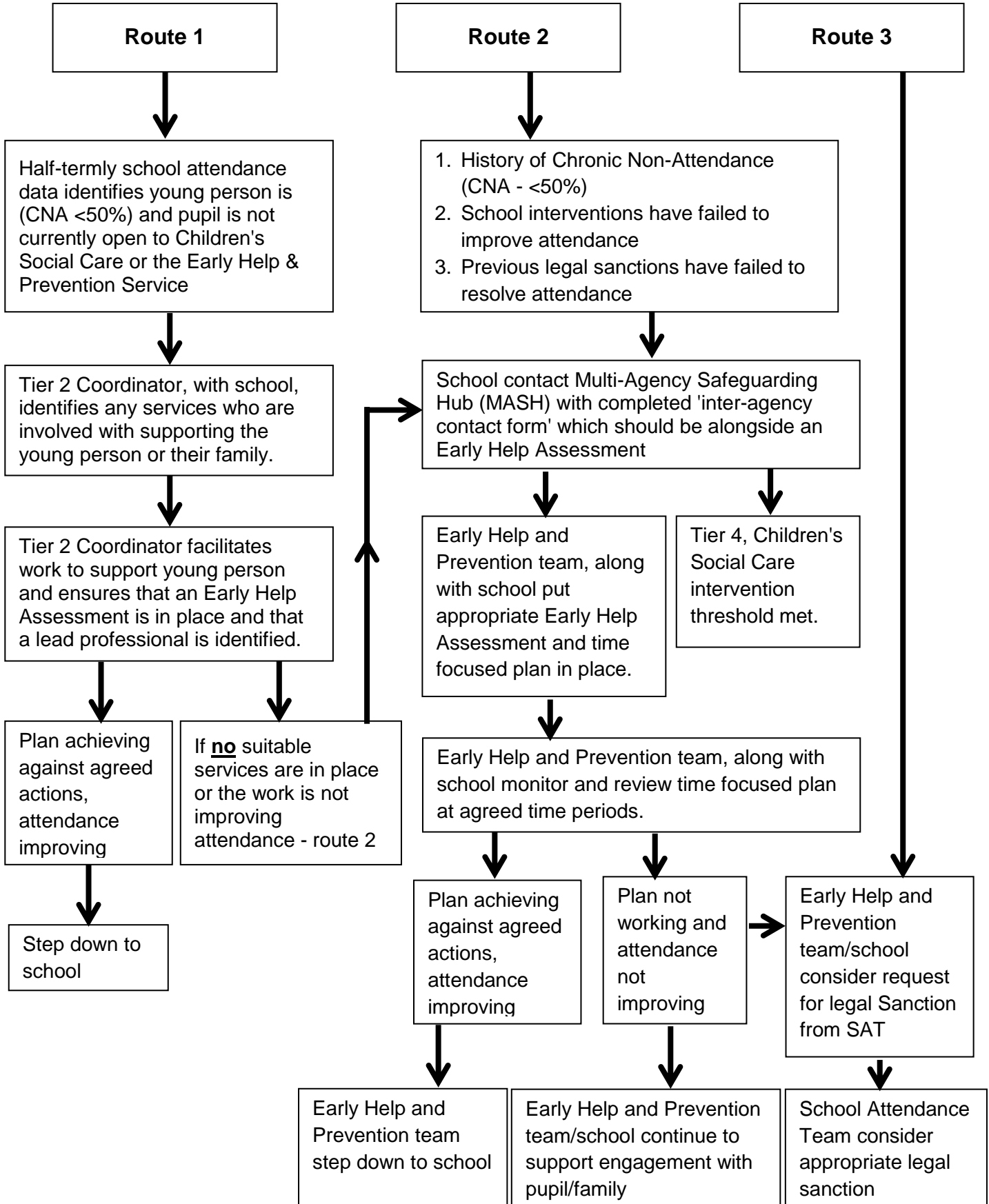




Pupil attendance is irregular to a degree of less than 50%; legal threshold met



Early Help and Prevention Top Tips - Supporting Chronic Non-attendance (Dec 2018)

The MASH Tier 2 Coordinators will proactively identify children with attendance below 50% and work with schools to agree a way forward. If there is already a plan in place which is working, this will continue. Where there is not an effective plan, they will agree and support a contact to the Early Help and Prevention Team.

Contacts to MASH must be submitted using the 'Interagency Contact Form' (IACF). In most cases, it is expected that an Early Help Assessment (EHA) will already be in place. The EHA should be submitted alongside the IACF. Where the school have been unable to engage the family in a meaningful way, the IACF will be sufficient.



When completing an IACF remember; the more information you include, the more robust the decision making process. Make sure you include information about:

- the actions you have taken
- what home factors are involved that you are aware of; e.g. separation anxiety, parental mental health, DV, substance misuse
- what school based issues are involved; e.g. peer conflict, isolation, poor academic ability or discipline issues
- what has worked; have there been any external agencies involved
- what has been done that hasn't worked
- any patterns in the non-attendance or is this a sudden deterioration
- are the Attendance Panel involved
- is there is an Education Supervision Order in place; what is the plan and are there any results
- why you are concerned and confirmation you've discussed this with the family



You should include a chronology of your engagement with the family.

The school submitting a contact to MASH will receive feedback about the decision made and should be contacted by the allocated lead professional. Where schools submit additional information to MASH, further feedback that it has been considered, alongside existing information, will be sent.



A lead professional from the Early Help and Prevention Team will work with the family for up to 6 months. They will identify all of the challenges the family have and work alongside them to take positive steps forward. At the end of the intervention, the majority of families will have made progress and a 'maintenance plan' will be agreed with them and the school.

This plan will include actions to sustain and continue improving attendance. In the most challenging cases, attendance may have improved but not to or above 50%. In these cases, families will still be stepped to school with a 'maintenance plan' that sustains and continues to improve attendance.