



- We launched the Shaping the Future of Portsmouth strategy 12 months ago
- It kick-started the regeneration of the city – physical, economic and social
- My presentation today will focus on the £1bn major regeneration schemes led by the council with investors and developers and the government
- And how local residents, young people and businesses benefit from our £1bn regeneration programme



- A lot is already happening and we have achieved significant success to date
- New Port Terminal – Mountbatten Centre – Spinnaker Tower – Gunwharf Quays – Mary Rose Museum
- The Trafalgar Gate Link Road, which has taken a huge amount of traffic out of the city centre
- But let's look at what is happening now



- Over 20 years of dreams to transform a rundown area of Portsmouth can now become a reality after the government announced almost £20m of funding
- The money will bring new life to the Tipner area and create a modern gateway to the city
- The council will provide Tipner junction and park and ride + £10m funding
- Also awarded by government - £11m to Northern Road bridge

Tipner Redevelopment £130m

Portsmouth
the great waterfront city

- Up to 1,250 new homes
- 25,000 sq m of employment for 1,500 new jobs
- Up to 1,800 space park and ride
- A hotel
- Community facilities
- Local retail
- Waterside public open space
- A new motorway junction



Artistic Impression of the Waterside Apartments



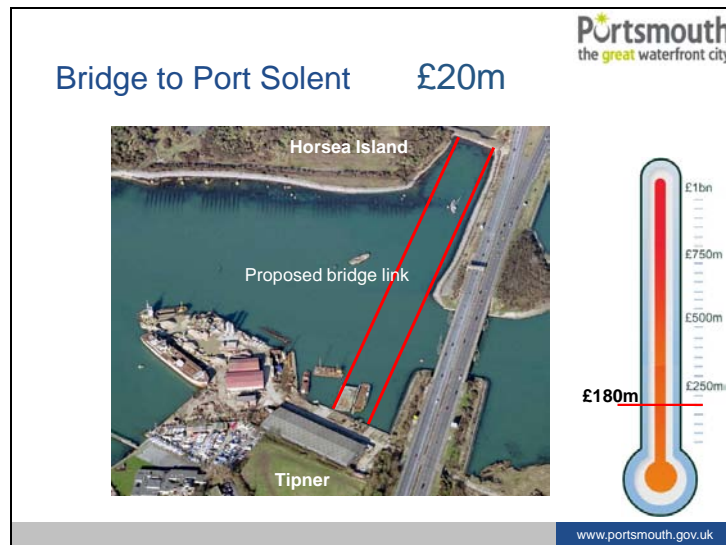
Artistic Impression of the New Houses surrounding the Public Open Space



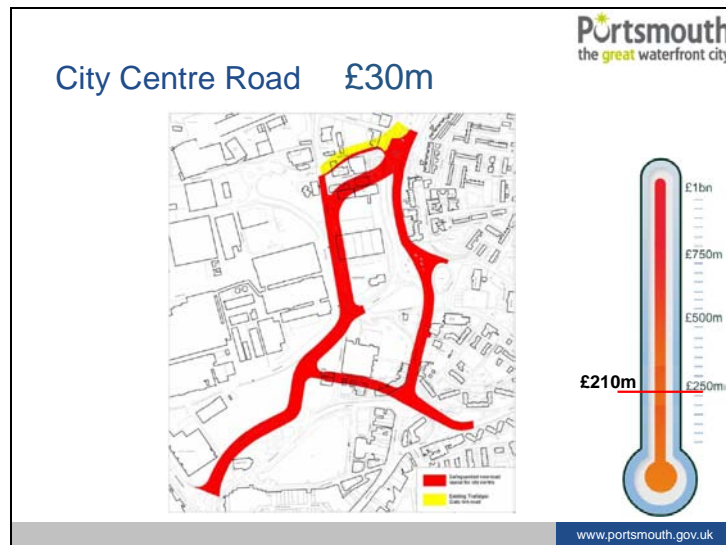
£1bn
£750m
£500m
£250m
£160m

www.portsmouth.gov.uk

- Yesterday PCC Planning Committee approved four planning applications, which will give the go ahead for regeneration of the land east of the motorway junction
- Planning committee approved over 500 homes for Tipner
- Investment of £130m led by PCC/HCA/TRC
- **Steve New** from TRC is here today and officers from HCA (Homes and Communities Agency)



- The next phase will be to design and build a bridge link to Horsea Island, enabling up to 500 new homes to be built – making over 1,000 in Port Solent and Horsea
- This will open up land for regeneration and access to the new proposed country park facilities



- Three weeks ago the council approved £100k to design a new road for the city centre. We are working with the government to borrow up to £20m to build this road, paid back by increased business rates (tax incremental financing)
- This is to stimulate and accommodate our investment and regeneration plans for the city centre, The Hard and the seafront
- Residents, business, shoppers and visitors **must** be able to travel easily and park if the city is to be successful



- Although almost all regeneration projects stalled during the credit crunch and recession. I am pleased to say we have signed a development agreement with Centros, and in January 2012 the council will receive their new proposals
- We expect the planning application in 2012/13 and will work with them to develop a fantastic city centre – opening 2018
- We have **John Marsh** from Centros here today. Centros has committed £50m to the city already. The total scheme will have a development value of around £270
- The city centre will be of highest quality. There will be **no free pass to mediocrity**

Dunsbury Hill Farm £12m

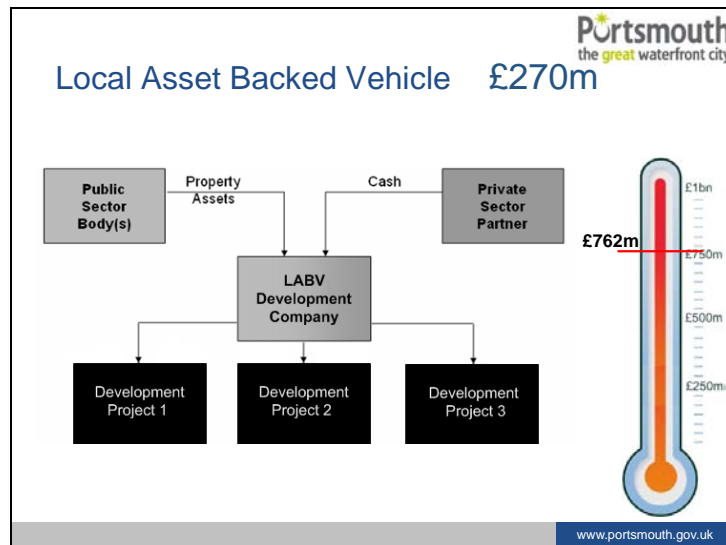
Portsmouth
the great waterfront city

£1bn
£750m
£500m
£250m

£492m

www.portsmouth.gov.uk

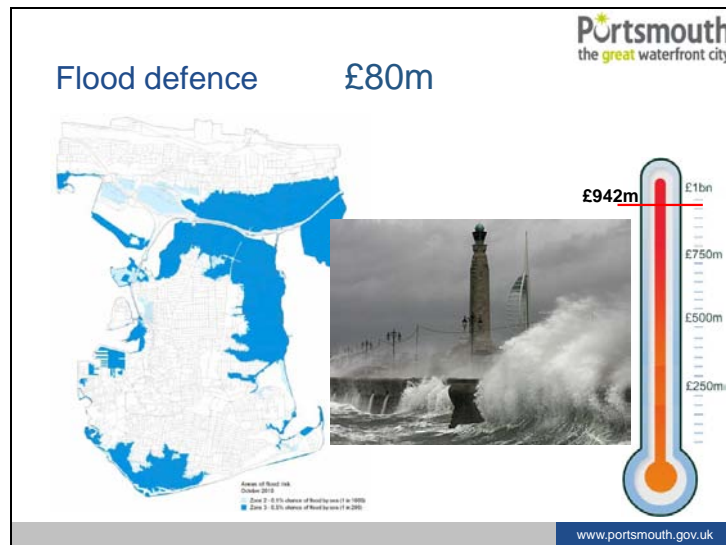
- We bought Dunsbury Hill Farm at the end of the war. Great investment from the city council
- This year we saw the opening of the Hindhead tunnel - This makes access to Dunsbury Hall Farm so much better and attractive to developers
- The council owns the site in Havant, and are working with PUSH, the Solent LEP, Hampshire County Council and Havant Borough Council. We aim to submit a planning application later this month to build a new road access to make the site attractive to developers. Once developed, hundreds of jobs will be created.
- Again we will look at government funding to help us and the Solent LEP and possibly regional growth funding – Sir Ian may be able to help



- The council is carrying out some detailed work, looking at our assets and land holdings to attract investment
- Under-used car parks, Dunsbury Hill Farm and land at Tipner are examples of the type of land we own which we want to attract investment to build houses, create jobs and increase wealth for the city and the surrounding area
- A decision will be made next year



- PCC launched the Seafront Strategy in 2010
- We are now preparing a detailed supplementary planning document which will set out clearly to investors our aspirations in terms of development and quality of design for our seafront
- We have over 7m visitors a year
- We have one of the most visually attractive seafronts and active seaways
- We wish to be a European City Break destination. We will encourage hotels, better public realm, co-ordinated attractions to keep visitors here longer, all year round



- **Our first priority is to protect our city**
- We have been awarded £1m for the Environment Agency to develop plans and design our flood defence system
- We need almost £80m for the most 'at risk' areas – Southsea and north of the city. We will bid for funding and need to use community infrastructure levy funding
- We need everyone's support - nothing will come easy
- Everyone in the UK is competing for these resources - we need everyone to give us support



- In addition to the major regeneration schemes, we have:
- The Blade – student accommodation. The 33-storey building, which is being built at Victoria Park, central Portsmouth, will house 600 students.
- No 1 Portsmouth of Surrey Street – 26-storey hotel
- Zurich building – hotel and office accommodation
- Lakeside North Harbour phase two – hotel, business accommodation and Porsche car dealership
- All have planning permission from the council and are encouraged to build high and with quality standards
- The Hard has a masterplan and we are beginning to see investment happening

Portsmouth
the great waterfront city

Funding

- In September ministers announced a £500m growing places fund, to “get Britain building again”.
- The Solent region has been awarded a £12m
- Regional growth fund success
 - Naval Base Trust and University of Portsmouth awarded £1.2m
 - Solent LEP, The News and University of Portsmouth awarded £2.1m
- Further £1bn announced
- Recent announcement that government has agreed an initial investment of £21m to Astrium, as part of the £200m investment in science nationally

www.portsmouth.gov.uk

- The Solent Region has been awarded £12m - Growing Places Fund
- Regional Growth Fund – some success achieved in the second round and now £1bn further to aim for.
- Sir Ian Wrigglesworth, Deputy Chairman of Regional Growth Fund Advisory Panel is with us today. Sir Ian we will look for your support.
- Government has agreed an initial investment of £21m, as part of the £200m investment in science nationally. The Astrium project will focus on the design and manufacture of radar satellites - capable of taking pictures of anywhere on earth within 24 hours, not affected by weather
- They will be designed, tested and built in Portsmouth and the contract will maintain existing jobs in Portsmouth

What does all this mean for Portsmouth?

Employment

- Estimated that up to 16,270 new jobs could be created by this investment and development
- There will also be a significant number of engineering and construction jobs
- House Builders Federation states that every home built creates 1.5 full-time jobs plus up to four times that in the supply chain

Benefit to the economy

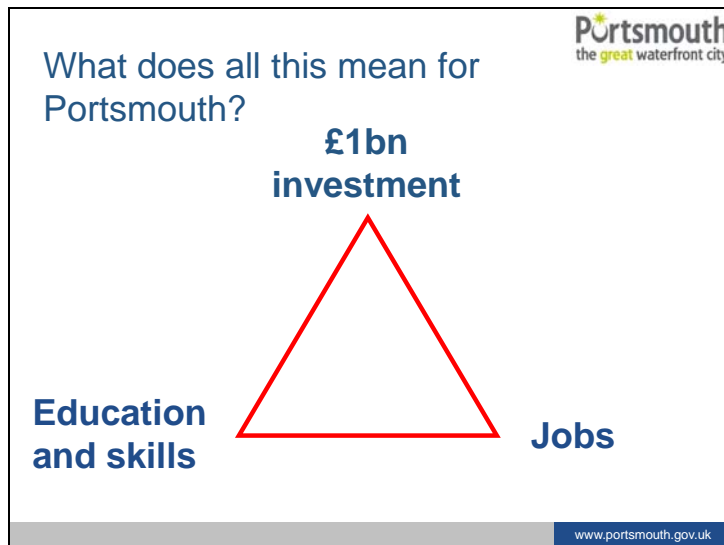
- The contribution to the economy by the goods and services produced within these developments (GVA) could be £700 million - £1 billion

Housing

- Over 5,000 new homes could be built

www.portsmouth.gov.uk

- 16,000 **new**, short and long term, jobs created by this investment including construction, retail, leisure, engineering, manufacturing
- £1bn in Gross Value Added (GVA) to increase the economy
- **Over 5000 new homes** - over the next ten years



- **If we achieve all of this and local people do not benefit we will have failed**
- We **know** when this is happening
- We **know** what jobs will be created
- We **know** when we need the skills
- We **know** which skills we need
- Our university, colleges and training providers must provide the appropriate training so that local people can get the jobs

Portsmouth
the great waterfront city

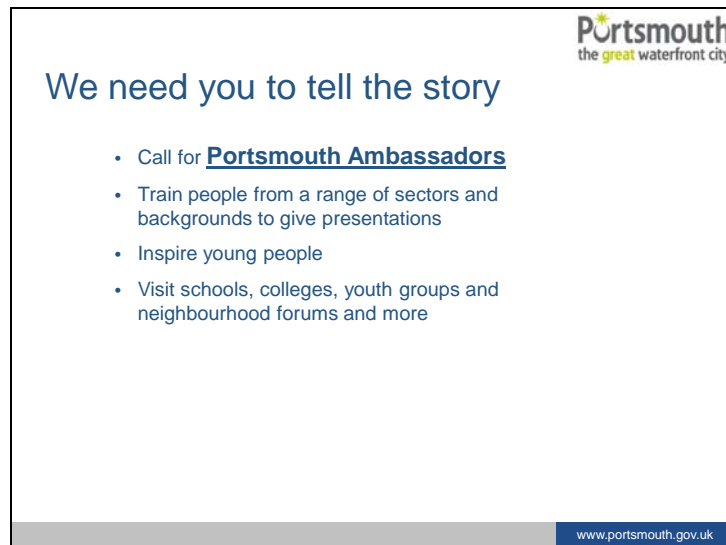
How can you become involved?

- Communications is key – tell everyone
- It is our job to make sure local people get the training and skills required to “get that job”
- Play an influential role on young people to help raise aspirations and goals
- “Regeneration happens in people’s minds”



www.portsmouth.gov.uk

- I can't go into detail now about apprenticeships, raising education attainment, training provision and inspiring young people, but we are drafting plans to create more apprenticeships. I have here an early draft, which we will be consulting on [***APPRENTICESHIP STRATEGY***].
- I can leave you with one thought. Regeneration is **not** just roads, construction, housing
- **Regeneration happens in people minds**
- We need to inspire our young people and our school leaders – **tell them this story** – engage them in this plan
- We need your help to do this



Portsmouth
the great waterfront city

We need you to tell the story

- Call for **Portsmouth Ambassadors**
- Train people from a range of sectors and backgrounds to give presentations
- Inspire young people
- Visit schools, colleges, youth groups and neighbourhood forums and more

www.portsmouth.gov.uk

- Sign up today to be an ambassador for the city!
- Inspire young people!
- Visit schools and neighbourhood forums – tell them this plan
- Sign up today – please!

Our job

Portsmouth
the **great** waterfront city

Our job is to keep the **great** in “the waterfront city”

Portsmouth
the **great** waterfront city

Lets keep it great together!

www.portsmouth.gov.uk

- Portsmouth is a **great** waterfront city
- Lets keep it great together