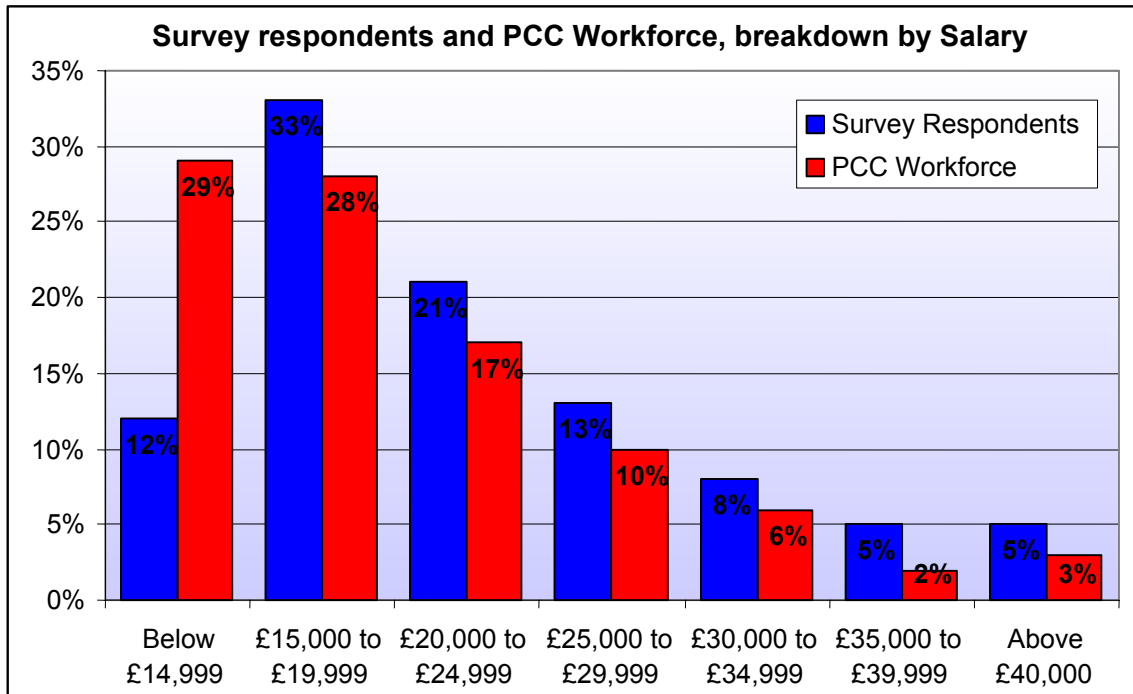
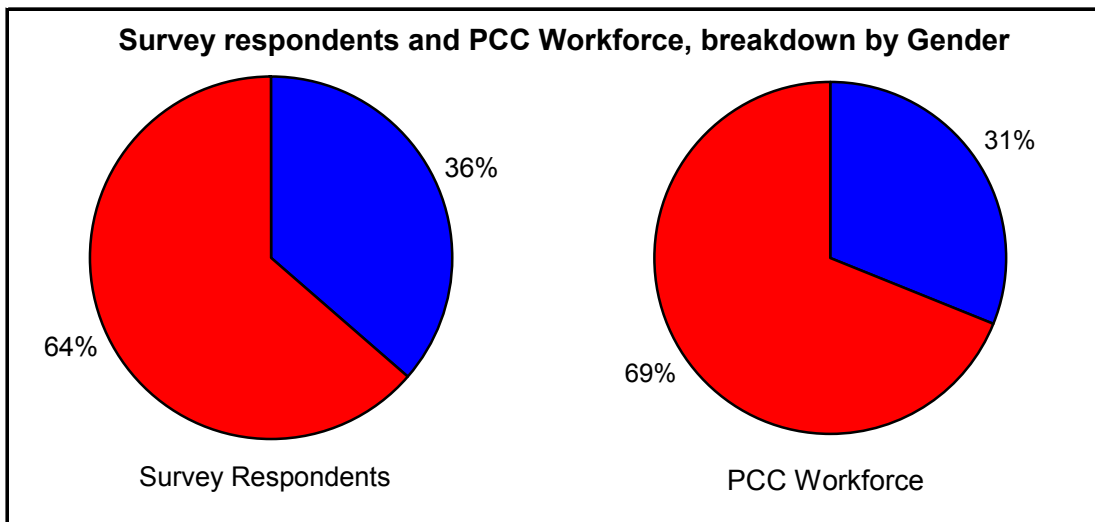


## Portsmouth City Council Employee Opinion Survey 2006

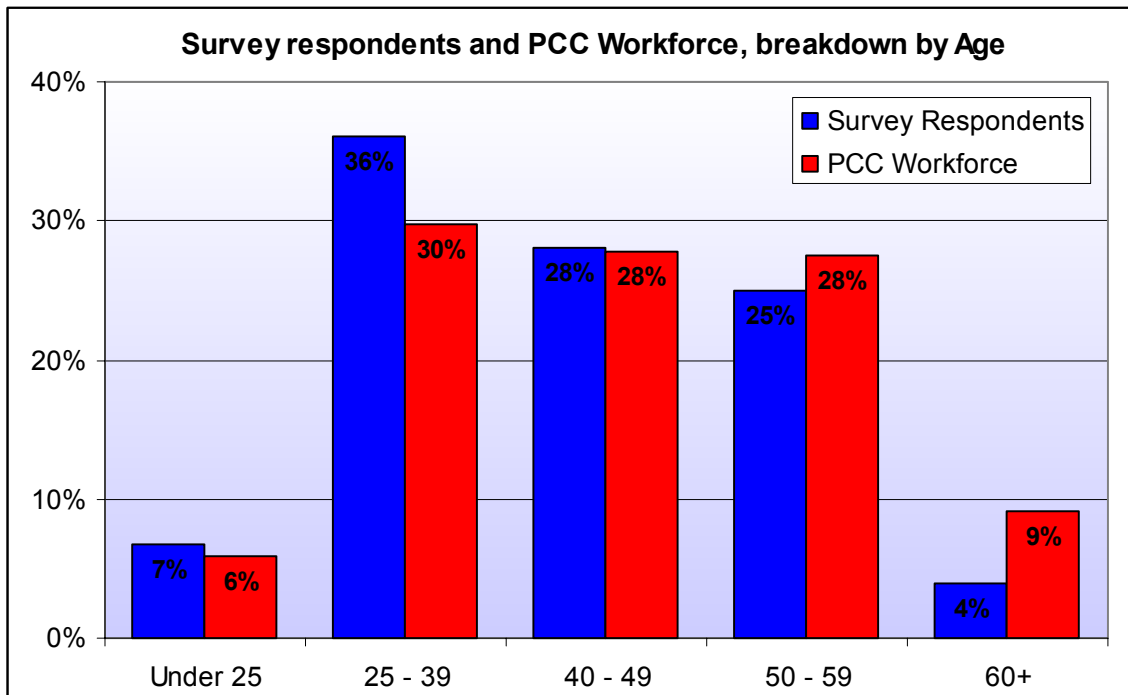
Questionnaires were issued to 4460 employees and 1402 were completed, giving a response rate of 31%. The charts below show how the completed responses compare to the PCC workforce profile:



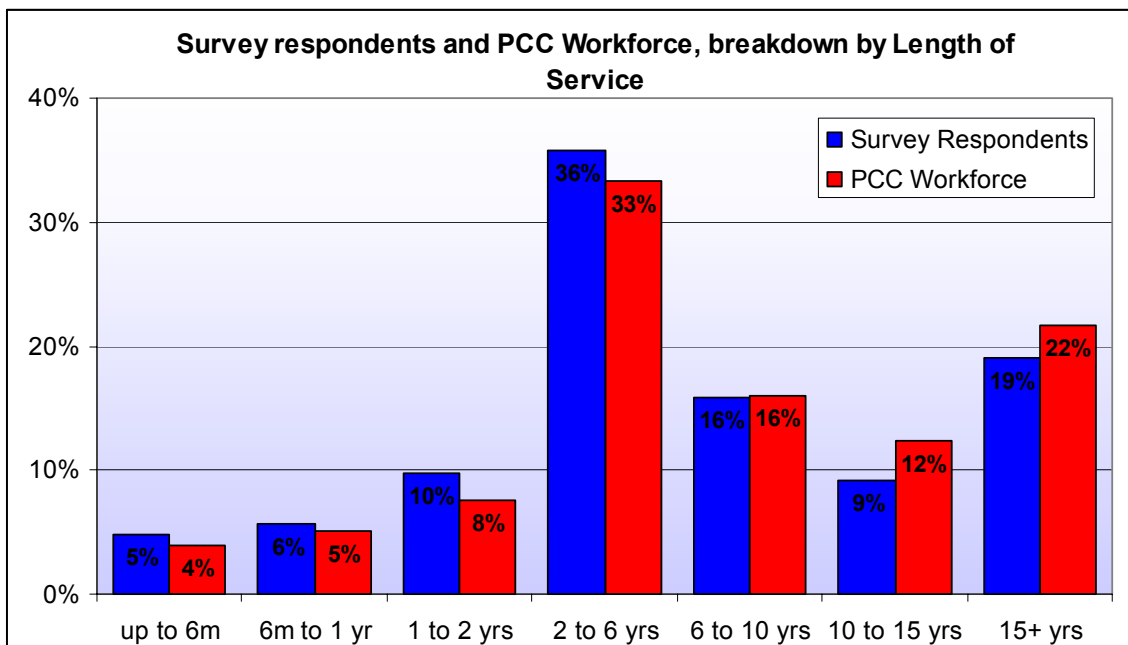
Therefore, the views of staff earning less than £15,000 p.a. are significantly under-represented in the survey compared to the PCC workforce profile.



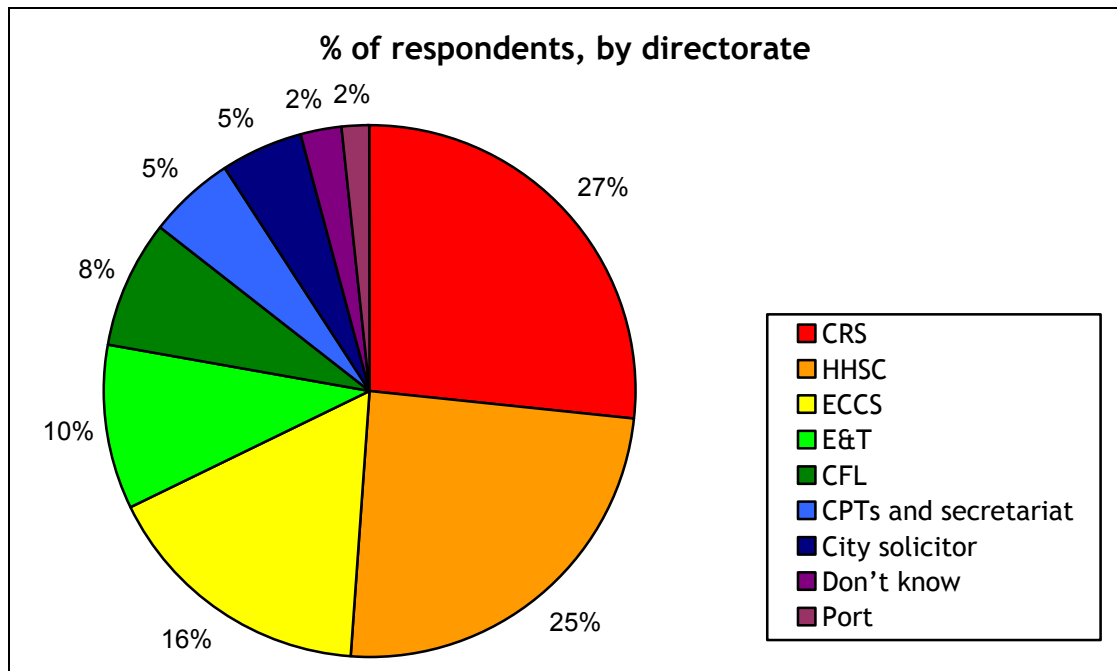
Therefore, men's views are somewhat over-represented in the survey



Therefore, the views of those aged 25-39 are somewhat over-represented in the survey and the views of those aged 60+ somewhat under-represented.



The length of service profile of survey respondents is broadly in line with that of PCC over all.



Within PCC the largest directorate is HHSC that accounts for 37 % of staff. However only 25% of respondents are from HHSC. The highest proportion of responses is from CRS (27%) whose staff account for 19% of PCC's workforce.